

**What is today's objective?**



**To demonstrate  
proper Fp<sub>ing</sub>  
technique for  
rolling prints**

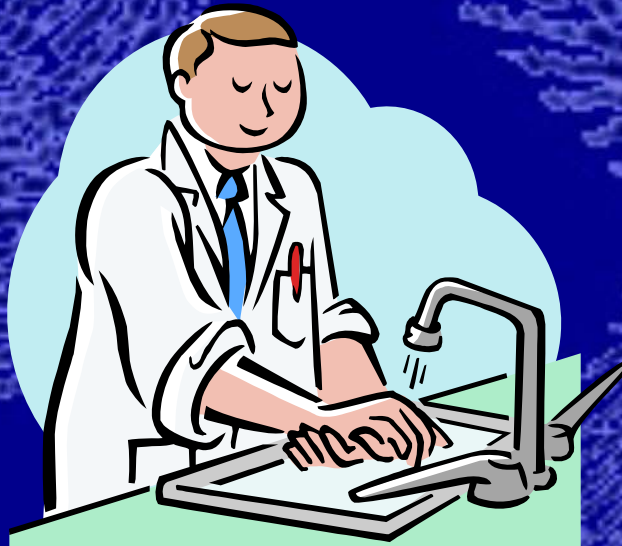
# HOW TO ROLL FINGERPRINTS



# INITIAL STEPS

---

Subject should have  
clean, dry hands



# ROLLING

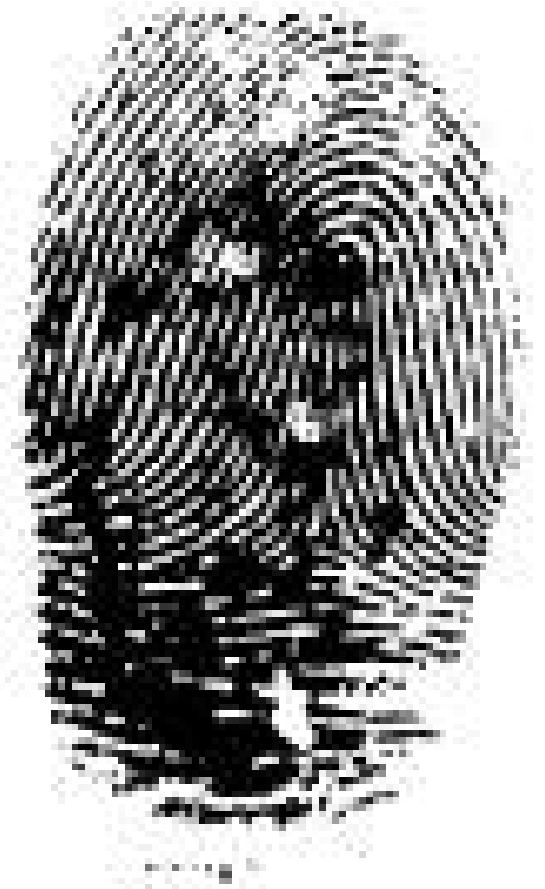
**Rolled impressions** are made by rolling the finger or thumb from **nail edge to nail edge**.

They are made to show the **entire friction surface** of the finger or thumb, from the **tip to one quarter inch below the 1<sup>st</sup> joint**






A



B

**FULLY ROLLED**

**PARTLY ROLLED**



There is a specific method of rolling the subject's fingers or thumbs in the ink and onto the fingerprint card to ensure a good impression.

**The basic premise is to roll the fingers or thumbs from awkward to comfortable.**

Hold hands out in front of you, and turn them in – this *should* be awkward

Now roll hands out – this *should* be comfy


Look how your hands move:

Right hand: Roll from L to R

Left hand: Roll from R to L

**\*\* Thumbs are opposite of fingers \*\***

**(go from INSIDE to OUTSIDE)**

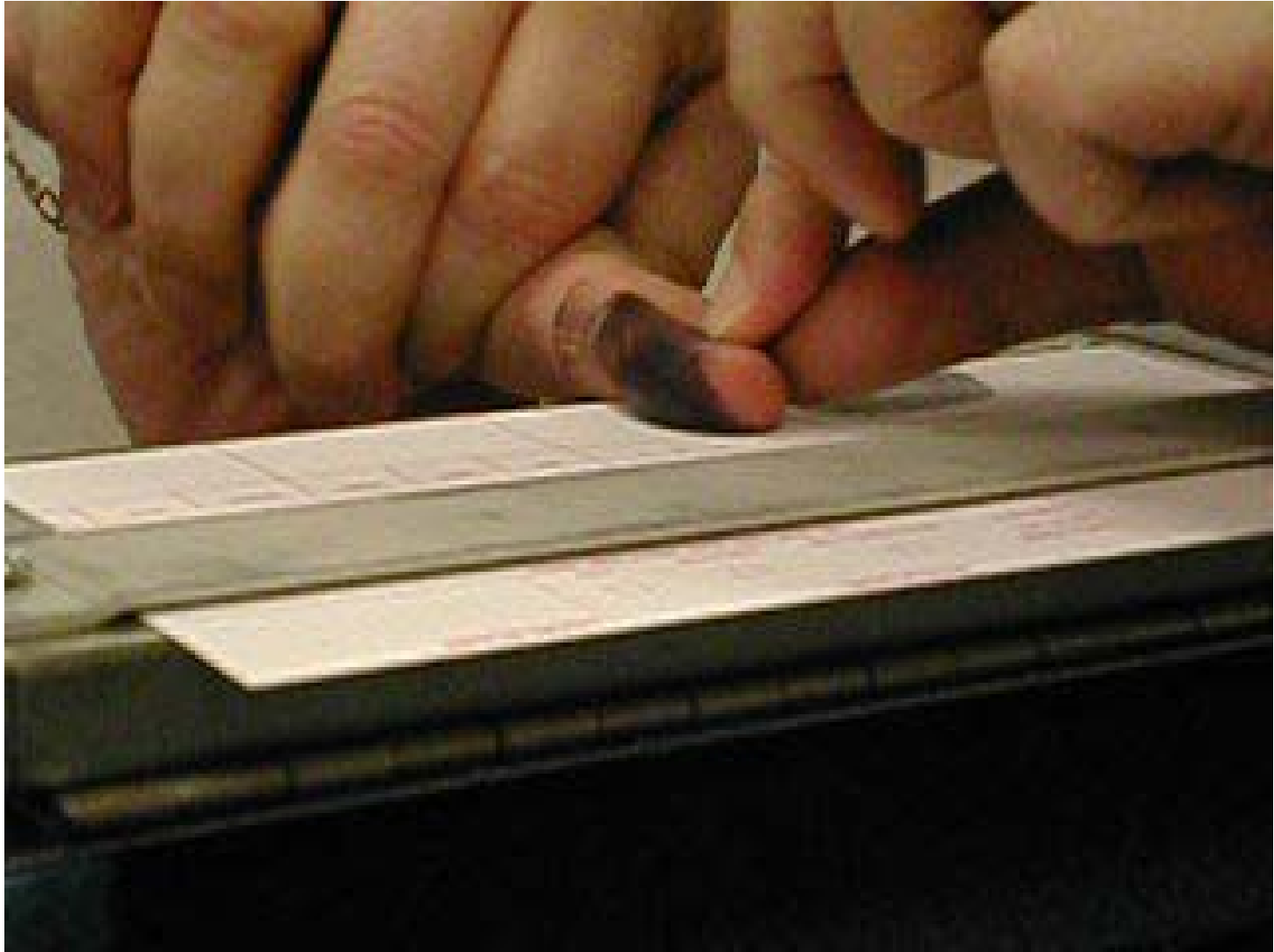


**Person taking prints:** grasp the top of the subject's hand & ensure that the finger to be printed is extended  
The roll is a single movement w/ only enough pressure to provide a clear print.

**Subject should look away &  
NOT try to “help”**





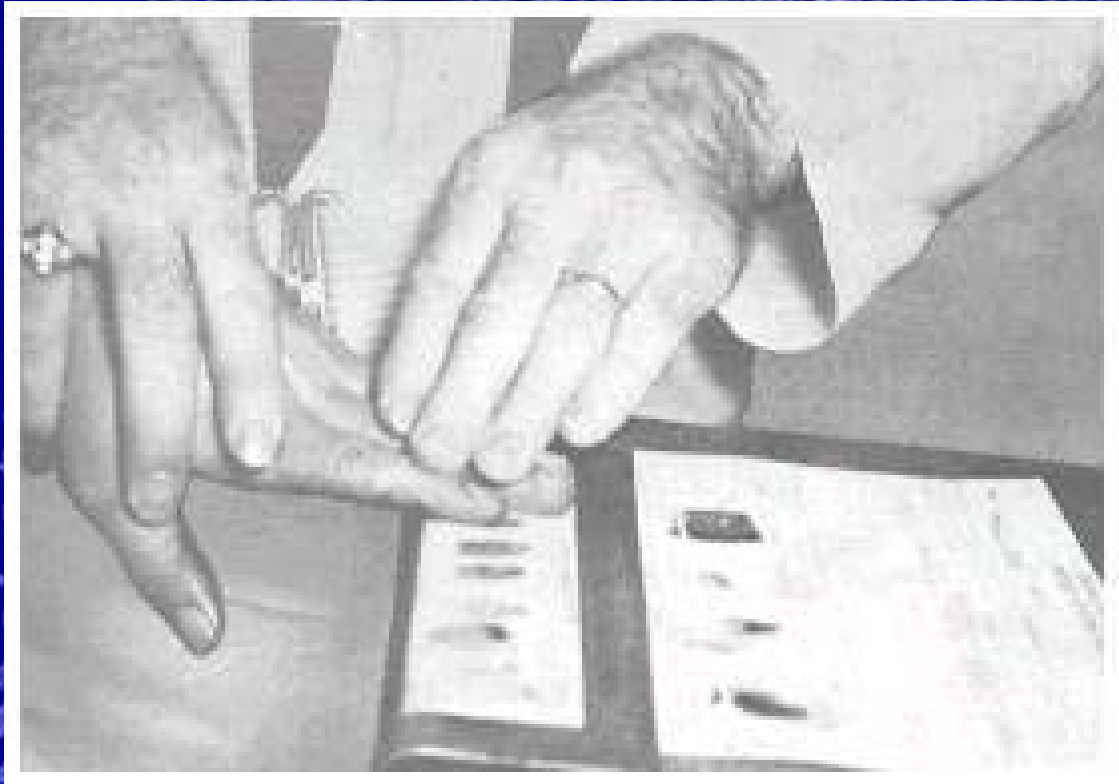


# PLAIN IMPRESSIONS

---

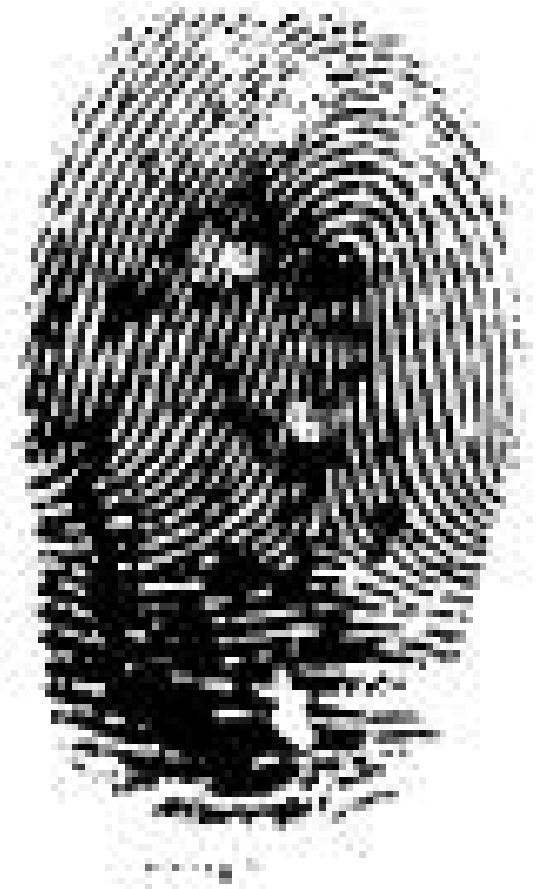
**Purpose:** to verify the order of the rolled impressions & show certain characteristics that are sometimes distorted in the rolled prints.

- 1. Simply press 4 fingers at a slight angle.**
- 2. Show the tips to  $\frac{1}{4}$  inch below the 1<sup>st</sup> joint.**
- 3. Subject's fingers are held straight & stiff.**
- 4. Hand should be level with the wrist.**
- 5. Person taking prints should grasp the wrist w/ one hand & press the fingers onto the card with the other hand.**





A



B

**FULLY ROLLED**

**PLAIN IMPRESSION**



**What is today's objective?**



**To demonstrate  
proper Fp<sub>ing</sub>  
technique for  
rolling prints**



# PRACTICE ROLLING PRINTS

---

**You** will roll the prints of your partner, and then they will roll your prints.

*Could you roll your own prints??*

**\*\* Practice in your EVID LOG before you go for the “Final Draft”**







# #1 Mistake: Not rolling nail to nail











**Rough Draft FPs go on LEFT side**

**On the LEFT SIDE:**

- 1. Critique YOUR prints**
- 2. CRITIQUE the prints YOU rolled**



# WORDS TO USE

---

- Poor ink
  - Improper hand cleaning
    - Incomplete inking
    - Improper rolling
    - Excessive inking
    - Insufficient inking
  - Excessive pressure
  - Insufficient pressure

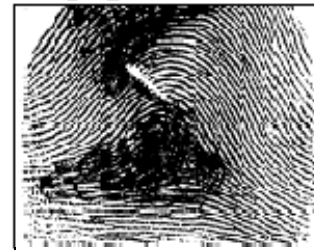
**Too Dark**  
(too much ink or pressure)



**Too Light**  
(too little ink or pressure)



**Ink Unevenly Distributed**  
(causing light and dark areas)



# ROLLING PRACTICE

- Do your **PRACTICE** in your notebook
- **REMEMBER: NAIL TO NAIL!!**
- When you get a **NICE, BIG FP** you can move onto your **FINAL DRAFT**
  - **SHOW** me your print
  - **Get your FP Card**
  - Use the “**Professional**” Ink
- **CLEAN UP YOUR MESS!@!@**
- Put **YOUR** card somewhere safe



WHEN FINISHED ROLLING

---

**Rough Draft FPs go on RIGHT side**

**On the LEFT SIDE:**

- 1. Critique YOUR prints**
- 2. CRITIQUE the prints YOU rolled**

# WORDS TO USE

---

- Poor ink
  - Improper hand cleaning
    - Incomplete inking
    - Improper rolling
    - Excessive inking
    - Insufficient inking
  - Excessive pressure
  - Insufficient pressure

**Too Dark**  
(too much ink or pressure)



**Too Light**  
(too little ink or pressure)



**Ink Unevenly Distributed**  
(causing light and dark areas)

